



# Bushman Awning & Awning Room (optional add-on)

Applicable to both 78" and 90" models



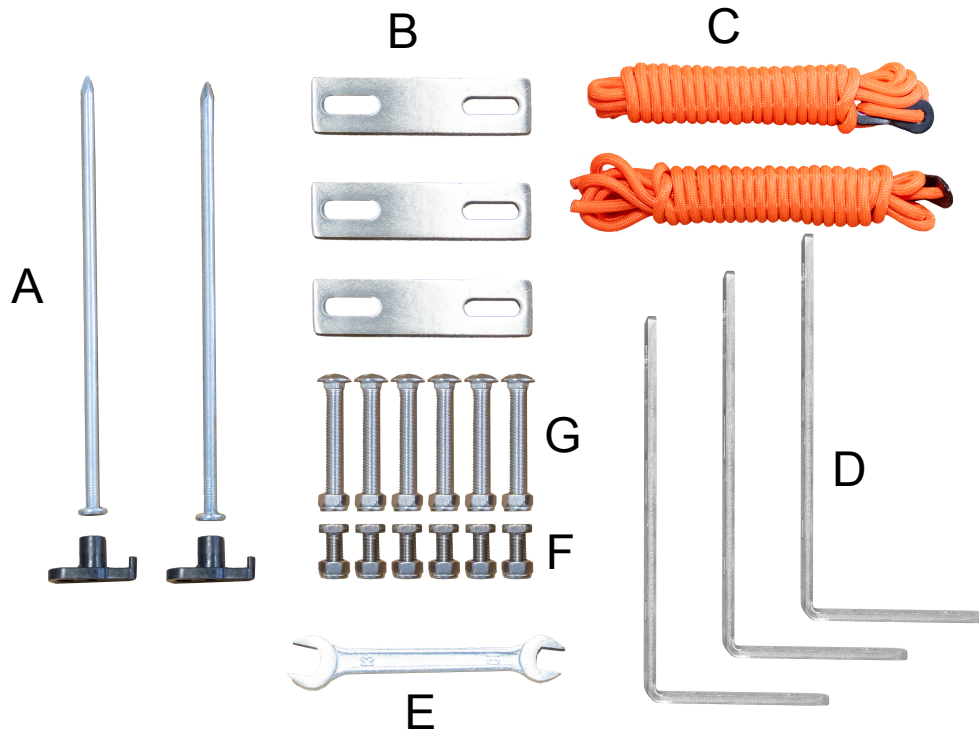


## **Thank you for purchasing a 23ZERO Bushman Awning**

Congratulations on the purchase of a 23Zero Bushman Awning. We strive to provide you with the ultimate camping experience. The Bushman Awning mounts directly to a roof rack or aftermarket roof bars. It opens and is fully set up in minutes. As well as our innovative Light Suppression Technology (LST) fabric.

PLEASE READ ALL INSTRUCTIONS PRIOR TO INSTALLING

## Hardware & Accessories



- A. Ground stakes with hook caps - 2x
- B. Flat Brackets (optional) - 3x
- C. Tie-downs/Guy ropes - 2x
- D. L-Brackets - 3x
- E. Wrench - 1x
- F. Awning track bolts with nuts - 6x
- G. Mounting bolts with nuts - 6x

## Setup & Install

Gently bend the rubber end cap, exposing the mounting track.



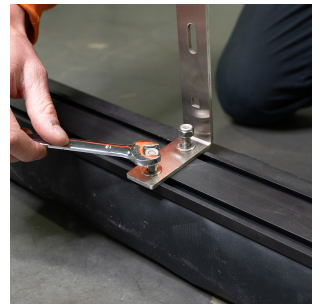
Insert 2 or 3 awning track bolts into the top channel and repeat on bottom channel. This depends on how many L-Brackets you will be using.



Attach L-Brackets to bolts and loosely secure nuts. Be sure not to tighten as you may need to adjust the position of the brackets.



Once the brackets are in the desired position, tighten the nuts.



Using the mounting bolts, secure awning to rack.

Note: Hardware supplied may not fit all rack configurations. Some racks may require different hardware.

# Deploying Awning

Completely unzip the awning cover and fold it up and out of the way.



Undo and release the awning using the Velcro straps. Be careful to hold the awning as it will fall when the straps are released.



Pull the awning roll out and up to expose the horizontal poles.



Carefully pull out the horizontal poles so that they are just over 90° to the base plate.

Using both hands, slowly walk backwards while unrolling the awning.



When the awning is fully extended, release the vertical poles and use the twist/lock feature to extend them to the ground, adjusting for desired height. Repeat on both sides.



Use the twist/lock feature to extend the horizontal pole and insert the peg into the hole at the end of the awning, extend until the pole until it is pulled tight, and then twist to lock in place. Make sure the peg passes through both holes. Repeat on both sides.

Secure the Velcro straps to the horizontal poles.



**ATTENTION:** If conditions permit, always utilize the included tie-downs/guy ropes and stakes to secure the awning. In rainy weather, lower one of the front vertical poles to allow for water to run off the awning.

# Awning Room Setup

Remove awning room from travel bag and unroll.



Locate and unzip the front valance from the awning room body. Feed the valance into the front extrusion.



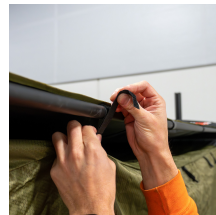
Locate and feed the awning room into the rear extrusion.



Zip the awning room body to the front valance. Lift the fabric ahead of the zipper to help. **Note:** It may help to temporarily shorten the length of the horizontal poles to do this step.



Secure Velcro loops to horizontal and vertical awning poles.



## Warranty

23ZERO will replace or repair any product at its discretion that is subject to faulty manufacturing or workmanship including materials.

### **Making a claim**

To make a claim in relation to the above manufacturers warranty please ensure you retain your sales receipt of purchase. Please contact us stating the nature of your claim and we will be in touch with you shortly. If you require additional assistance, please call 801-349-1099 to discuss and arrange your claim. Product subject to warranty will be sent to 23ZERO USA, 2195 S Presidents Dr. Ste B. West Valley City, UT 84120. All freight costs associated with return of product for assessment is payable by the customer.

Due to our policy of continual product development, the specifications, colors and feature may vary.

Please visit <https://23zero.com/returns/> to see full details.