

23ZERO



MADE BETTER



ONYX 270

USER MANUAL



SAFETY CONSIDERATIONS

WARNING

- Keep all flame and heat sources away from the awning materials.
- Under no circumstance should any naked flame sources or heating devices be used inside or near the awning.
- Keep campfires well away from the awning.
- Keep a look out for any airborne embers that may come in contact with the awning.
- Have a fire extinguisher or water bucket nearby in case of fire.
- Do not smoke within the awning.
- Do not operate any device which burns fuel inside the awning.
- Keep exit clear.

WARNING

During set up and first use, some aluminium swarf may be present inside the roof top awning. We make every possible attempt to expel all aluminium swarf, however, with vibrations caused by logistics some residual swarf may dislodge and reappear. It is advised to remove and clean these during first set up.

WARNING

Please ensure all 12V electrical connections from your vehicle's 12V system to the awning's internal power system are correctly wired and fused. Incorrect wiring and/or lack of fuses may cause short-circuiting of the system and cause a fire. 23ZERO disclaims all responsibility for damage caused by incorrect wiring.

INSTALLATION & INSPECTIONS

Awnings have many moving parts, so regular maintenance checks are always advised. During trips regularly check that all nuts and bolts attaching the awning to the vehicle as well as hinges and brackets are tight and in good condition.

Alterations and / or inclusions such as roof racks and awnings applied to the vehicle roof may affect vehicle handling and characteristics. The manufacturer (23ZERO) disclaims all responsibility in case of accidents and / or damage due to installation of an awning to an underrated roof rack, improper use, improper maintenance or checking the tightness of the brackets regarding the installation of the roof rack system.

IMPORTANT

Before installing your 23ZERO Awning please ensure you understand the following:

- Your vehicle's maximum roof load rating.
- Your roof rack's maximum load rating including off-road capacity.

The maximum amount of weight you can safely add to a vehicle's roof / cargo area differs according to make and type of vehicle including aftermarket additions such as roof racks / bars.

Note: Roof rack off-road limits are immensely different to normal road use load ratings. If in doubt, please contact your vehicle manufacturer and roof rack manufacturer / supplier for specified loading capacity of your vehicle and roof rack.

Not all factory roof racks or aftermarket roof bars can safely accommodate roof top awning models. The responsibility of fitting this roof top awning to rated roof racks or roof bars lies with the purchaser.

Improper installation or use of the ONYX 270 AWNING may result in serious injury and/or property damage. Follow the installation instructions carefully to ensure proper installation to vehicle and safe use of the awning.

HARDWARE & ACCESSORIES

The ONYX 270 AWNING includes a mounting kit with everything required to mount the awning to most roof racks and platforms. **The mounting kit is boxed separately to the awning.**

2 x Mounting Bracket



8 x M8 button-headbolt, nut & washer (To assemble mounting brackets)



8 x M8 hex-head bolt, nut & washer (To install awning to mounting brackets)



2 x 10mm/13mm Spanner, 1 x Allen key



4 x Mounting Plate (To install mounting brackets to roof rack)



8 x M8 hex-head bolt, nut & washer (To install mounting brackets to roof rack)



1 x LED Light Switch



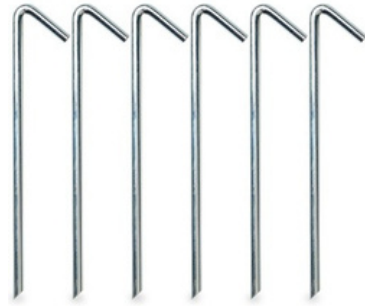
2 x Tensioning Strap



6 x Guy Rope



6 x Peg



1 x Leg pole bag (Packs inside awning in transit)



1 x Mounting kit bag



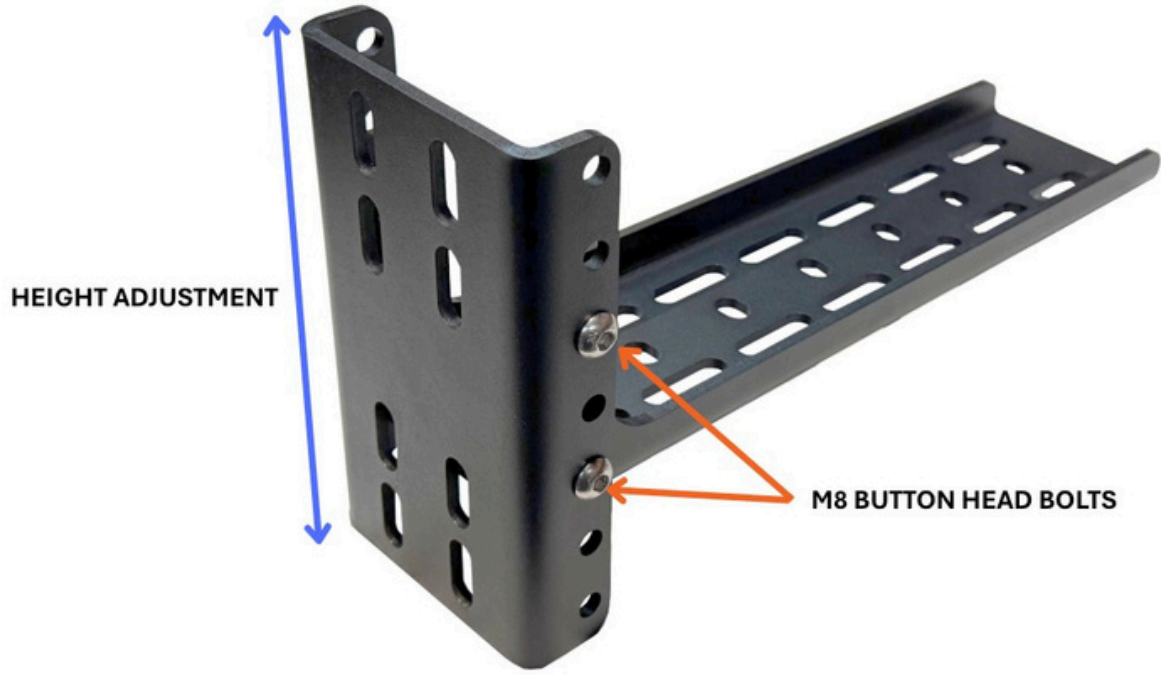
**1 x Wireless LED light remote
(Requires 1 x CR2025 3V Battery)**



ASSEMBLY

Out of the box, the ONYX 270 AWNING requires some of its components to be installed prior to mounting to your vehicle.

Mounting Brackets – Set the desired height of the mounting brackets and insert 4 x M8 button-head bolts from the outside facing inwards. Tighten with supplied washers and nyloc nuts. Tighten using 5mm Allen key and 13mm spanner.



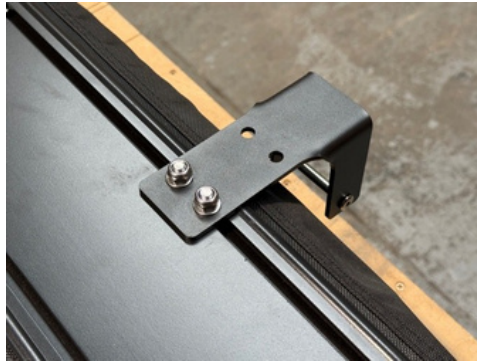
(Optional) Onyx 270 Ladder Mounts – if you have purchased these ladder mounts, install these before installing the 2 mounting brackets.

1. Insert 4 x M8 hex-head bolts into top channel on back of awning.

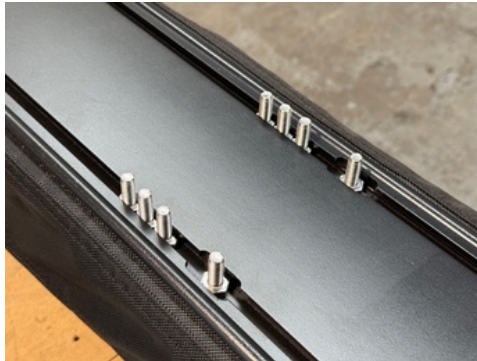


2. Attach ladder mounts using supplied washers and nyloc nuts.

- Do not tighten these until the awning is mounted to the vehicle, as they may require adjusting to suit the D-Zip entry into your rooftop tent.



Awning Bolts – Insert 8 x M8 hex-head bolts into back of awning (4 in each channel).



IMPORTANT

The mounting brackets supplied with the ONYX 270 AWNING must be installed **no more than 600mm** from the ends of the awning. Exceeding this length will create too much unsupported mass and will void any warranty.



The maximum span of the 2 mounting brackets is 1620mm (outside edge to outside edge)



INSTALLATION TO ROOF RACK

The ONYX 270 AWNING can be installed to most roof bars or platform racks using the supplied mounting kit. In some instances, T-Bolts may be required to install the mounting brackets to the roof rack.

1. Install the 2 x mounting brackets to the vehicle's roof rack.

- Ensure the span between these brackets is no more than 1620mm (outside edge to outside edge) or 1520mm (center to center)

Use the supplied M8 hex-head bolts and 4 x mounting plates if required. T-Bolts can be purchased on 23ZERO's website if necessary.

2. Measure center to center distance between brackets and position awning bolts to suit.

3. Lift the awning into position onto the brackets.

- It helps to have 2 people lift the awning at each end, with an additional person to help line up the awning bolts into the brackets.
- Once aligned, fix supplied washers and nyloc nuts to the awning bolts. Support the weight of the awning and slide left/right to desired position on vehicle.

4. Tighten all 8 nyloc nuts using 13mm spanner or socket.

- Thread the nuts on by hand and then use a 13mm spanner to tighten all 8 nyloc nuts.
- Ensure the bolts are straight when tightening to prevent galling.
- Do not use a rattle-gun or electric ratchet as these can cause cross-threading.
- Do not over-tighten.

5. Final inspection.

- Ensure all 8 nyloc nuts are tight and there is no movement of the ONYX 270 AWNING on the vehicle's roof rack.

IMPORTANT

Regularly check that all nuts and bolts attaching the awning to the vehicle as well as hinges and brackets are tight and in good condition.

Regularly check your roof rack is securely mounted to your vehicle and that there are no signs of wear or damage.

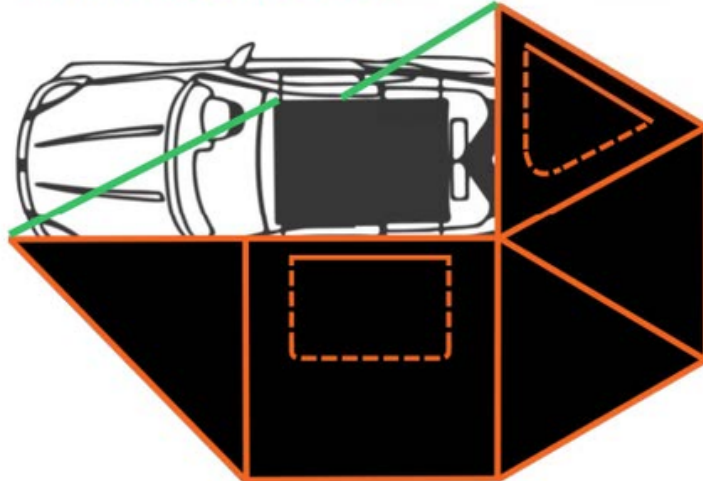
By following these steps, you are ensuring that your ONYX 270 AWNING is securely mounted and safe to use.

OPENING AND SETUP

1. Position 2 x tensioning straps on vehicle

- Attach these straps in positions on the vehicle that will allow the awning to be correctly tensioned. See diagram below:

Attach straps to roof rack



2. Unzip transit cover.

- Fold the transit cover over the back of the awning.

3. Undo 3 x Velcro straps.

- Remove additional leg pole bag from awning. (This is packed separately upon unboxing. They are to be stored inside the awning when in transit).



4. Unfold rear rafter arms towards the back of the vehicle.

- Fold arms around the rear of the vehicle and attach to rear tensioning strap.
- Tighten strap until rear rafter arm is at 90°



5. Unfold front rafter arms and attach to front tensioning strap.

- Tighten front strap until awning canvas is taut.



6. Initial setup complete.



- Plug in LED lights to supplied LED light switch. The lights can be powered using a portable power pack / phone charger, or via a 5V USB outlet in your vehicle.

WARNING

Please ensure all 12V electrical connections from your vehicle's 12V system to the tent's internal power system are correctly wired and fused. Incorrect wiring and/or lack of fuses may cause short-circuiting of the system and cause a fire. 23ZERO disclaims all responsibility for damage caused by incorrect wiring.

IMPORTANT

Set up your ONYX 270 AWNING with a common-sense approach.

The ONYX 270 AWNING is intended to be a self-supporting awning. We strongly advise taking a proactive and sensible approach to reduce the potential for harm or property damage caused by unexpected strong wind gusts. Utilizing the integrated poles and securing guy ropes for added stability while using the awning will enhance safety and prolong the products lifespan.

TO AVOID PERSONAL INJURY AND OR PROPERTY DAMAGE, 23ZERO STRONGLY ADVISES AGAINST SETTING UP THE ONYX 270 DURING PERIODS OF HIGH WINDS OR INCLEMENT STORMY WEATHER. PLEASE NOTE THAT DAMAGE RESULTING FROM ADVERSE WEATHER CONDITIONS OR IMPROPER USAGE IS NOT ELIGIBLE FOR COVERAGE UNDER THE MANUFACTURER'S WARRANTY.

CLOSING & PACKDOWN

1. Ensure all LED lights are switched off and unplugged from power system.

- Disconnect LED light controller from plugs.



2. Unhook both tensioning straps

- Press the button on the tensioner to loosen the awning.
- Remember to remove these from your vehicle before driving away.

3. Fold the front rafter arms into the awning.

- Ensure these arms are folded under the middle canvas section.



4. Fold rear arms over the top of the front arms.



5. Position Velcro D-ring straps on top of the rafter arms

- Roll the canvas up and to the left side of the awning



6. Tighten all 3 velcro straps.

- Place the additional 2 leg poles on top of the rafter arms under one of the straps.



7. Zip up transit cover.

- Run your hand in front of the zipper to prevent canvas from being caught in the zipper.
- **Pack up complete.**



CARE & MAINTENANCE

At 23ZERO, we take pride in the quality and durability of our products. Below are some guidelines which must be followed to prolong the life of your product. Regular care and maintenance of this product is your responsibility.

CLEANING

Clean with lukewarm water and soft bristle brush.
Do not use soaps and or detergents.
Do not expose to petro-chemicals.

STORAGE

Certain situations may require the ONYX 270 AWNING to be packed down wet. It is essential that at the earliest opportunity the ONYX 270 AWNING is re-opened and allowed to dry fully. Though we use the best polyurethane proofing available, prolonged exposure to moisture causes hydrolysis which can affect the integrity of the proofing. Storing the ONYX 270 AWNING wet in warm conditions is likely to cause mildew growth which will stain canvas and lead to premature breakdown.

WATERPROOFNESS

23ZERO uses a selection of refined raw materials and treatments in its design and development processes including long lasting polyurethane coatings and high frequency seam sealing. With multiple layer seams and addition of zips wind driven rain may cause small amounts of water ingress at times. Rubbing a softened candle wax stick over the affected area will help reduce any water ingress.

RTT entry points are fitted with premium waterproof zips. Performance may vary depending on weather conditions and awning setup. For best results, ensure adequate water run-off angles and position the zip puller at the highest point beneath the zip skirt.

HYDROLYSIS

Hydrolysis is the chemical breakdown of polyurethane (PU) caused by its gradual absorption of moisture or water over time, a process more prevalent in humid or tropical environments due to higher moisture levels. This reaction is a natural characteristic of PU and is not considered a manufacturing fault of 23ZERO products. To reduce the risk of hydrolysis, it is crucial to use the awning regularly, provide proper care, and conduct routine inspections. During long-term storage or stowing, ensure all additional bedding, such as sleeping bags, blankets, and pillows, are removed to avoid compressing the canvas for extended periods. The awning canvas should be checked regularly and exposed to direct sunlight periodically to help maintain its integrity. These practices will significantly extend the lifespan and performance of your awning.





Warranty

23ZERO will replace or repair any product at its discretion that is subject to faulty manufacturing or workmanship including materials.

Making a claim

To make a claim in relation to the above manufacturers warranty please ensure you retain your sales receipt of purchase. Please contact us stating the nature of your claim and we will be in touch with you shortly. If you require additional assistance, please call 801-349-1099 to discuss and arrange your claim. Product subject to warranty will be sent to 23ZERO USA, 2195 S Presidents Dr. Ste B. West Valley City, UT 84120.

All freight costs associated with return of product for assessment is payable by the customer.

Due to our policy of continual product development, the specifications, colors and feature may vary.

Please visit <https://23zero.com/returns/> to see full details.